



Delta Point
Industrial

DP 6200 Heavy Duty Receptacle Guard

The DP6200 Receptacle Guard protects plugs from unwanted contact from foreign objects, that often results in loss of power or physical damage to the plug and receptacle. Contact from objects in the vicinity of a receptacle can cause an electrical short inside the receptacle box, thus damaging plugs and potentially igniting any combustible material nearby.

The DP6200 is securely anchored with lag bolts to the wood or metal stud located directly beside the receptacle box inside the wall. The two protruding rails can withstand the equivalent force of 1500 lb. from the side, 8000 lb. from the front and 5000 lb. from the top and bottom. The sloped rails are designed to deflect objects out and away from the receptacle, thus protecting plugs and cords from damage.

- **Reduce Costs** — An average care home may replace numerous electrical outlets and receptacles per year at substantial cost and time
- **Increased Safety** — Reduce the risk of electrical shock and fire to residents, staff and the facility
- **Reliability** — Equipment cords plugged into the outlet can be securely zip-tied to the installed guard preventing accidental unplugging or removal.
- **Durability** —The DP6200 guard is made from ultra-strong Lexan material similar to that used in hard hats and bullet-proof glass.



FOR MORE INFORMATION OR TO ORDER:

Phone: 1-866-319-8822
306-260-9015

E-mail: info@deltapointindustrial.com

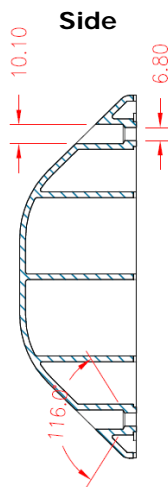
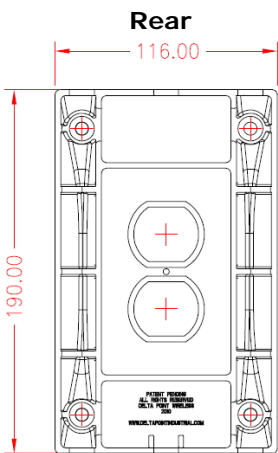
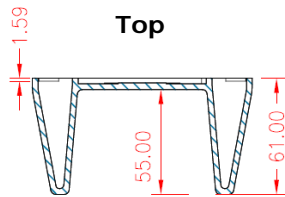
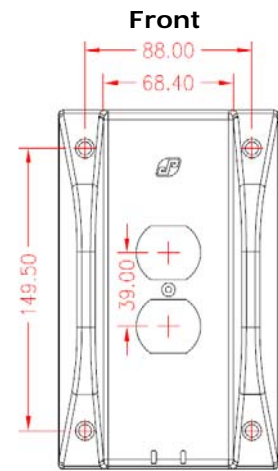
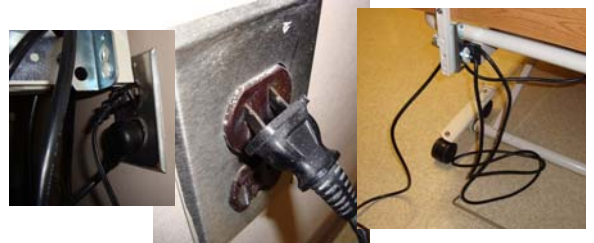
Website: www.deltapointindustrial.com



Delta Point
Industrial

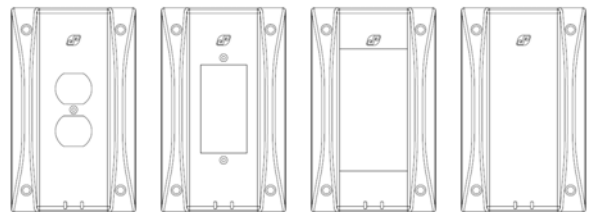
DP 6200 Heavy Duty Receptacle Guard

- Lag bolts onto wood, metal or concrete
- Built in strain relief — cords can be securely zip-tied to guard to prevent accidental unplugging
- Compatible with 45 degree side angle cords
- Made from ultra-strong Lexan material similar to that used in hard hats and bulletproof glass.



The DP6200 Receptacle Guard is designed to be fastened to one or more studs on either side of the receptacle box using provided lag bolts. Heavy duty drywall anchors are recommended for the side without a stud.

The two protruding rails can withstand the equivalent force of **1500 lb.** from the side, **8000 lb.** from the front and **5000 lb.** from the top and bottom. The sloped rails are designed to deflect objects out and away from the receptacle protecting plugs and cords from damage.



(All Dimensions in mm)

FOR MORE INFORMATION OR TO ORDER:

Phone: 1-866-319-8822

306-260-9015

E-mail: info@deltapointindustrial.com

Website: www.deltapointindustrial.com